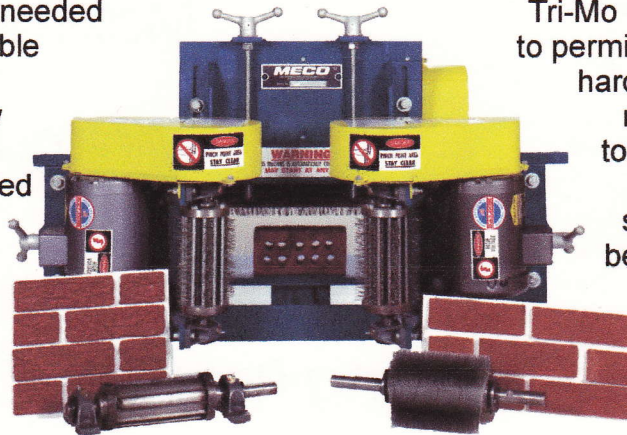


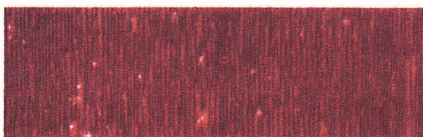
New and Exciting Textures for your Face Brick

MECO's Tri-Mo is just what is needed to produce attractive and durable textures for your face brick. Texturing Rolls are individually powered by three dust proof motors mounted on a fabricated steel frame. In heavy production it provides repeatable products, long term performance, low maintenance and dependable service.



Tri-Mo is completely adjustable to permit repeatable texturing of hard, dense clay columns... ranging from the lightest touch to the heaviest bite. Hand adjustments and self-aligning pillow block bearings allow setting the desired texture and column dimensions to your own specifications.

The MECO Tri-Mo produces many of the standard textures made for years in the brick industry. With a little imagination... it will also produce many distinctive textures that will result in more new sales-producing brick faces. Standard textures made on MECO Tri-Mo are shown below:



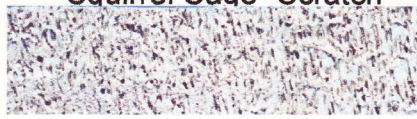
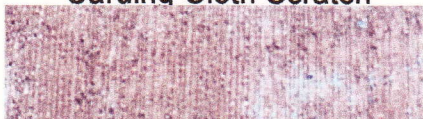
Carding Cloth Scratch



"Squirrel Cage" Scratch



Bark Texture



MECO - The Manufacturers Equipment Company